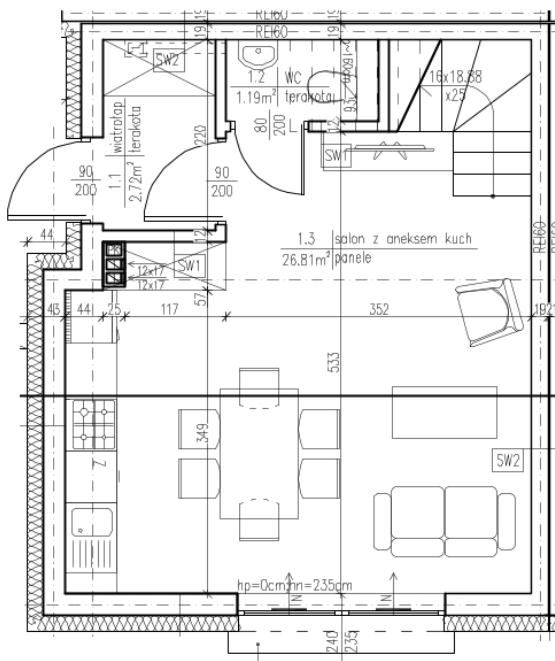


**115,65m<sup>2</sup> ul. Pastelowa 13B/1**  
**OGRÓDEK 30m<sup>2</sup>**

**E 2**



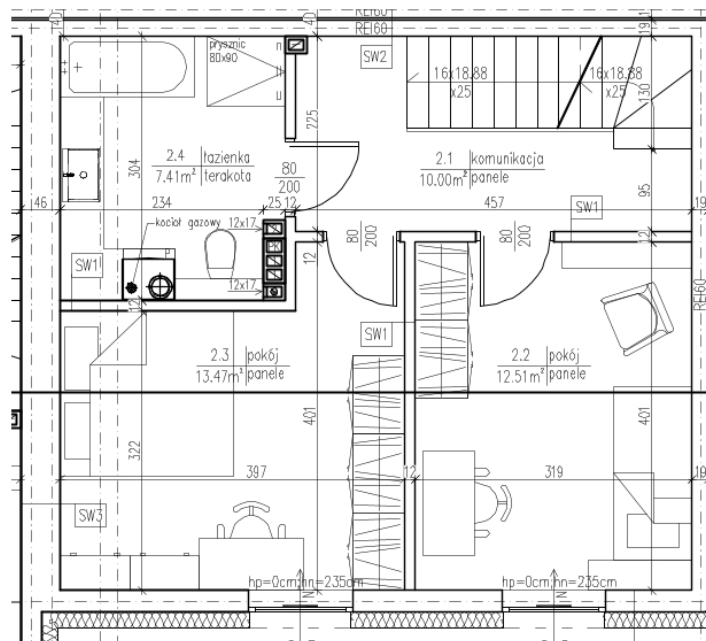
**PARTER**



**PARTER 30,72 m<sup>2</sup>**

Wiatrołap 2,72 m<sup>2</sup>  
 Salon z aneksem 26,81 m<sup>2</sup>  
 WC 1,19 m<sup>2</sup>

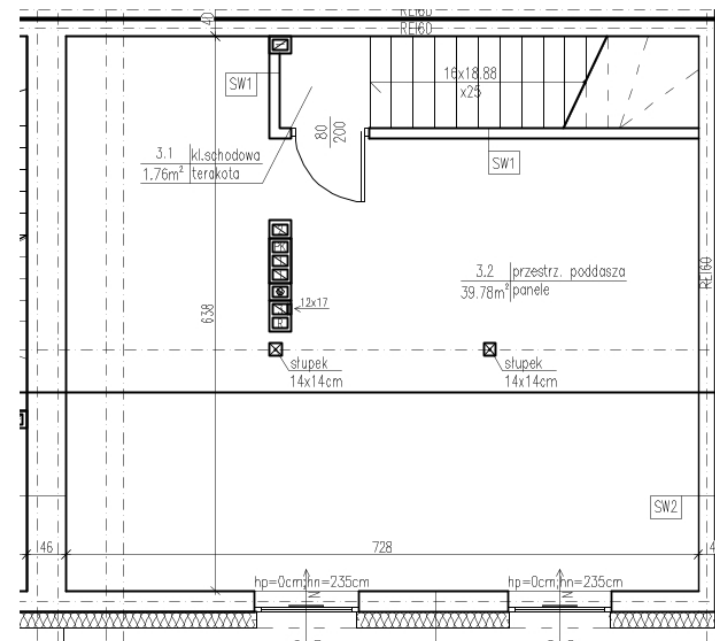
**PIĘTRO**



**PIĘTRO 43,39 m<sup>2</sup>**

Komunikacja + cz.schodów 10,00 m<sup>2</sup>  
 Pokój 12,51m<sup>2</sup> m<sup>2</sup>  
 Pokój 13,47 m<sup>2</sup>  
 Łazienka 7 41 m<sup>2</sup>

**PODDASZE**



**PODDASZE 41,54 m<sup>2</sup>**

Klatka schodowa 1,76 m<sup>2</sup>  
 Przestrzeń poddasza 39,78 m<sup>2</sup>